

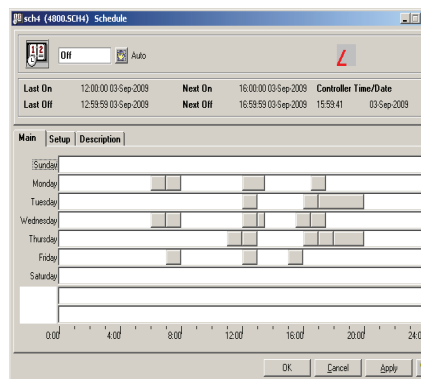
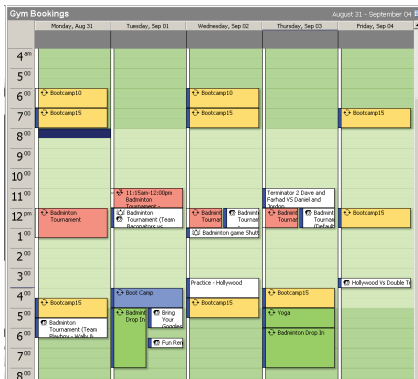
Software

DFS: Delta Facility Scheduler

Description

The Delta Facility Scheduler is software for automatically transferring room occupancy information from a room booking system to a building automation system (BAS). Events booked through a room booking system are mapped to BACnet schedules on a controller that in turn enable HVAC, Lighting and Access for that room. Matching the heating and lighting of a room to the actual use allows for maximum energy savings. The Facility Schedule also saves labor and reduces potential errors associated with manually programming HVAC equipment schedules.

The Facility Scheduler can pull occupancy information from enterprise room booking software such as Ad Astra Schedule VII, Dean Evans EMS, ActiveNetworks Class7 and CollegeNet R25, as well as Exchange and Google calendars. Alternately, if booking software is not used, a full featured web calendar is included for event scheduling.



Application

The Facility Scheduler is ideal for any facility that uses event scheduling for room allocation such as conference centers, hotels, banquet halls, auditoriums, sports facilities and schools.

Event scheduling is more flexible than static weekly schedules and better suited for room warm-up/cool-down situations than simple occupancy scheduling. Typically, larger rooms that have intermittent occupancy will see the most energy savings when using the Facility Scheduler.

Benefits

Energy savings

- Set heating and lighting to match occupancy, reduce heating and lighting costs in unused space.

Labor savings

- Eliminate the manual entering of booking times.
- Automatic schedule adjustments. No more forgotten schedule changes.

Specifications

Operating System

Windows 7 / Windows 2008

Minimum PC Requirements

Intel/AMD @ 1 GHz

2 GB RAM

2 GB free hard disk space

Connection to email server for email notifications

Technology Built on

Apache

MySQL

PHP

Python

WebCalendar

Delta V4 BACnet stack

Room Booking Integration:

Ad Astra Schedule ver. 7

CollegeNet R25

Dean Evans EMS

ActiveNetwork Class7

Microsoft Exchange 2003/2007

WebCalendar

Google Calendar

Custom Integration available

Software

DFS: Delta Facility Scheduler

Event Mapping

Device	Sched Obj	Friendly Name	Pre-start Offset (minutes)	Calendar	Category	Shutdown Offset (minutes)	Add Schedule
62000	1	Arena A - MUA2	-30	[Class7]ArenaA	All	15	Delete
62000	2	Arena A - Ceiling Fans	-5	[Class7]ArenaA	All	15	Delete
62000	3	Arena A - Exhaust Fans	-30	[Class7]ArenaA	All	15	Delete
62800	8	Arena A - HID Lighting	-30	[Class7]ArenaA	All	15	Delete
61800	1	Arena B - MUA1	-30	[Class7]ArenaB	All	15	Delete
61800	2	Arena B - Ceiling Fans	-5	[Class7]ArenaB	All	15	Delete
61800	3	Arena B - Exhaust Fans	-30	[Class7]ArenaB	All	15	Delete

Calendar



Features

- Calendar-to-BACnet conversion engine, On-demand and scheduled operation.
- Automatic operation, after initial configuration software runs in the background.
- Built in fully customizable Web-based Event Calendar Server.
- Works with both Ethernet and BACnet/IP Delta BACnet controllers.
- Version independent, use with Delta 3.30, 3.33 or 3.40 BACnet controllers.
- Web user access control.
- Single and Recurring events.
- Multi-room & multi-day events.
- Allows for warm up / post event time offset.
- Email Notifications.
- Support for Microsoft Exchange, Google Calendar and enterprise booking software.
- Simple, flexible configuration.
- Scalable.

Ordering

DFS - Delta Facility Scheduler

DFS - Eng - Engineering Services
(for initial setup and custom integration, hour units)

Subject to change without notice.